

MA SELF-LEVELING 300

Floor leveling compound



MA SELF-LEVELING 300

FLOOR LEVELING COMPOUND

I. DESCRIPTION:

MA Self-Leveling 300 is a pre-mixed, cement based self-leveling mortar, designed for both interior and exterior applications.

When mixed with clean water, it creates a uniform liquid mixture that forms a flat and durable surface. MA Self-Leveling 300 can be applied in layers, with a maximum thickness of 10 mm per layer.

II. USES:

MA Self-leveling 300 is suitable for the following application:

- Creating new floors for both interior and exterior areas.
- As a self-leveling mortar layer that can be tiled or carpeted over with adhesive.
- As a substrate for industrial flooring prior to applying epoxy or polyurethane coatings.
- For polished floor applications in malls, showrooms, shops, restaurants, and apartment

III. ADVANTAGES:

- Easy to use, only the addition of water.
- Can be applied by hand or pump at a thickness of 2-10 mm per layer.
- Good adhesion.
- High early strength.
- High strength and abrasion resistance.
- Walkable within 6 hours.
- Non toxic.

IV. PRODUCT INFORMATION:

Data	MA Self-Leveling 300
Base	Cement and admixtures..
Appearance	Powder cement grey
Density	Bulk density of powder: ~ 1.30 kg/liter Density of fresh mortart: ~ 2.10 kg/liter
Compressive strenght	1 day: ≥ 10Mpa 3 days: ≥ 15Mpa 7 days: ≥ 20Mpa 28 days: ≥ 25Mpa
Flowability	125 - 150mm (ASTM C1708)
Setting time	Initial: ≥ 30 minutes Final: ≤ 2 hours
Substrate temperature	10 - 35°C
Mixing ratio with water	20-22% (by weight) ~5.0 – 5.5 litres per 25kg bag
Consumption	25kg bag to 0.012m ³ mortar Coverage: - 6.5 m ² with 2 mm thickness - 4.3 m ² with 3 mm thickness
Packaging	25 kg bag
Shelf life	12 months (in unopened packaging)
Storage conditions	Stored properly in unopened, original packaging. Dry, cool, shaded place

V. APPLICATION:

Surface preparation:

- Concrete surfaces should be clean, sound and free from oil, grease, laitance and loose particles.
- Any existing paints, coating or floor coverings must be removed.
- Absorbent substrates must be saturated thoroughly, but no standing water.
- Repair Cracks and Voids: Large cracks and voids should be filled with a suitable concrete repair mortar before applying **MA Self-Leveling 300**.
- Ensure Cured Concrete: The floor must be fully cured and dry.
- Apply a Primer: A suitable primer (MA Latex P100) should be applied to the surface to enhance adhesion and reduce air bubbles, ensuring a smooth finish.
- If the floor has high moisture content or rising damp, apply a moisture-blocking epoxy coating or grind the surface to create a rough texture for better adhesion of **MA Self-Leveling 300**.

Mixing:

- Powder should be added to the pre-gauged water to suit the desired consistency.
- Mix mechanically for at least 3 minutes with a low speed electric drill (max. 500 r.p.m.) with a disc agitator attached, until a smooth consistency is achieved.
- If the surface of the mixture shows excessive air bubbles, do not proceed with the application. Add more powder immediately during mixing to achieve the desired flowability.
- Prepare only enough material for application within 10 to 15 minutes to ensure optimal workability.

Applying:

- The compound should then be screeded out and trowelled to the desired finish.
- **MA Self-Leveling 300** can be applied in layers up to 25 mm thick per layer. The next layer can be applied directly onto the surface once the previous layer is walkable – approximately 6 hours after application.
- Immediately after application ventilate with spike roller to remove entrapped air and to obtain an even layer.

Important notes:

- Do not overwater, overtime when mixing or add water to remix again.
- The self-leveling mortar must cure for 24 hours.

Cleaning:

Clean all tools and equipment with water immediately after use. Hardened mortar can only be removed mechanically.

VI. ECOLOGY, HEALTH AND SAFETY:

PPE: Wear suitable protective clothing, goggles and gloves during working with this product.

Ecology: Do not dispose into drains, water or soil.

Transportation: Non-hazardous.

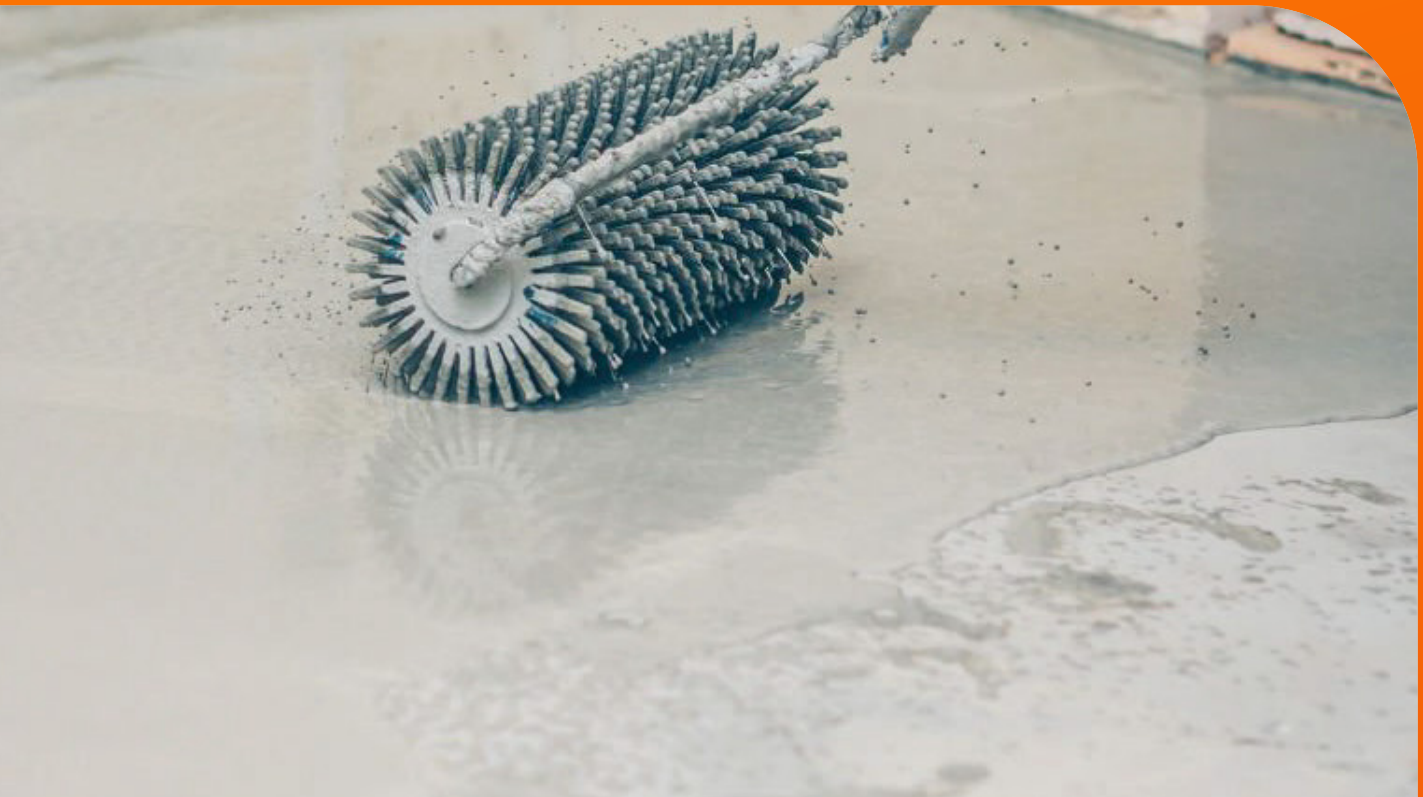
Waste disposal: According to local law.

Important notes:

MA Self-Leveling 300 is cement base and is therefore alkaline. Suitable precautions should be taken to minimize direct contact with the skin. If the material gets into the eyes, rinse immediately with clean water and seek medical attention.

Refer to the Product Safety Data Sheet (MSDS) and other relevant safety documentation.

M-ATLANTIC




CONTACT US.

 +84 337 817 565

 export@m-atlantic.com

 <https://m-atlantic.com>

 Epic Tower Building, No. 19 Duy Tan, Cau Giay Ward,
Hanoi City, Vietnam

